



FTTH Outdoor Drop Cable 2 Core 3 Slings 3 Steel Wire GJYXCH

Our Product Introduction

for more products please visit us on fiberoptical-cables.com

Basic Information

- Place of Origin: GUANGZHOU/CHINA
- Brand Name: CABLEPULS
- Certification: ISO/CE/ROSH
- Model Number: FTTH DROP CABLE
- Minimum Order Quantity: 2km
- Price: negotiate
- Packaging Details: Wooden Spool /drum
- Delivery Time: 5-25days
- Payment Terms: 30%TT as deposit,70%Balance before shipping.
- Supply Ability: 100km

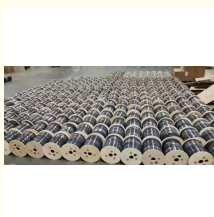


Product Specification

- Model: FTTH DROP CABLE
- Cable Model: GJYXCH/GJYXFCH
- Outer Sheath Color: Black
- Cable Length: Customized
- Feature: Flame Retardant Characteristics
- Jacket: HDPE, MDPE, LSZH, PE
- Installation Style: Indoor & Outdoor Self-Support Drop Cable
- Messenger Wire: Steel
- Highlight: FTTH Outdoor Drop Cable, Outdoor Drop Cable GJYXCH, FTTH Cable 2 Core



More Images



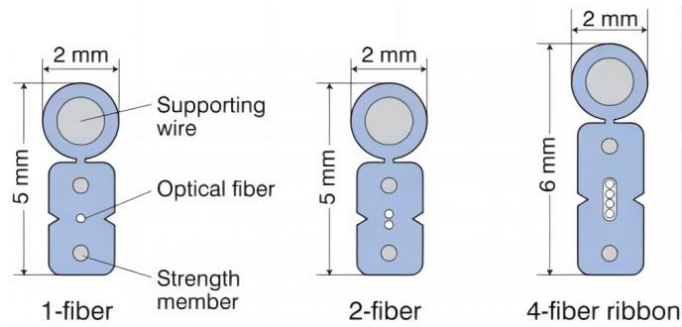
Product Description

FTTH Drop Cable 2 Core 3 Slings 3 Steel Wire Outdoor Drop Cable GJYXCH

FTTH DROP CABLE 2CORE 3SEALINGS 3STEEL WIRE OUTDOOR DROP CABLE refers to a type of fiber optic cable used in Fiber-to-the-Home (FTTH) installations. It is designed for outdoor use and is commonly used to connect the optical fiber distribution network to individual homes or buildings.

This specific cable configuration has 1 fiber core, which carries the optical signal, and is protected by 3 sealings, providing additional layers of protection against moisture and other environmental factors. The cable also features 3 steel wires, which provide strength and durability to withstand outdoor conditions and prevent damage to the optical fiber. Overall, the FTTH DROP CABLE 1CORE 3SEALINGS 3STEEL WIRE OUTDOOR DROP CABLE is designed to provide reliable and high-quality fiber optic connectivity to homes and buildings, ensuring efficient data transmission and communication.

Our Product Introduction

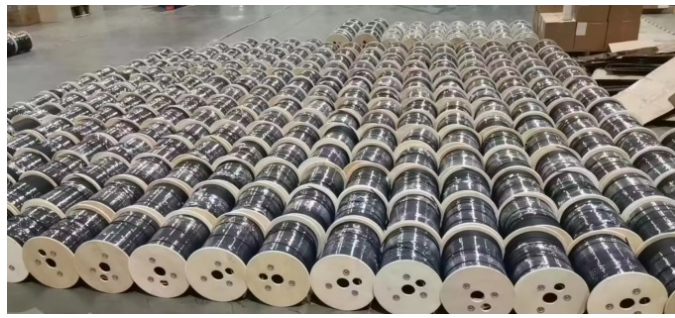


The Technical Data of ASU Fiber Optic Cable

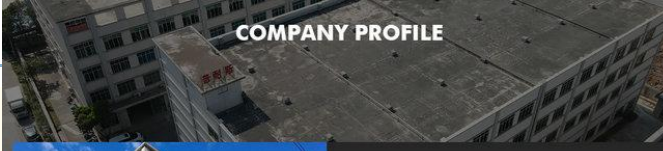
Part code	FTTH-GJYXCH-2F	
Number of Fibers	Unit	2
Strength member	Material	STEEL WIRE 0.45mm*2
Messenger wire	Material	Solid wire 1.0mm
Outer sheath	Material	LSZH Black
Cable nominal Diameter	MM ±0.1	2.0*5.2±0.2mm
Cable nominal weight	Kg/Km ±2	21
Max. working tension	N	600
Span	Meter	50/60
Max. crush resistance	N	600 (Short term) / 400(Long term)
Min. bending radius	At full load 20 x Cable OD (including poles) At no load 15 x Cable OD	
Temperature range	Installation -0 -> +50 Operation -20 -> +70	

Fiber Parameters


No.	Items	Unit	Specification
1	Mode Field Diameter	1310nm	μm 9.2±0.4
		1550nm	μm 10.4±0.8
2	Cladding Diameter	μm	125.0±1.0
3	Cladding Non-Circularity	%	≤1.0
4	Core-Cladding Concentricity Error	μm	≤0.5
5	Coating Diameter	μm	245±5
6	Coating Non-Circularity	%	≤6.0
7	Cladding-Coating Concentricity Error	μm	≤12.0
8	Cable Cutoff Wavelength	nm	λ _c ≤1260
9	Attenuation(max.)	1310nm	dB/km ≤0.35
		1550nm	dB/km ≤0.21
		1380nm	dB/km ≤0.35
		1625nm	dB/km ≤0.24
10	Attenuation and wavelength	1310nm 1285-1330nm	dB/km ≤0.04
		1550nm 1525-1575nm	dB/km ≤0.03
		1550nm 1480-1580nm	dB/km ≤0.05
11	Dispersion	1288-1339nm	ps/(nm.km) ≥-3.5, ≤3.5
		1271-1360nm	ps/(nm.km) ≥-5.3, ≤5.3
		1480-1580nm	ps/(nm.km) ≤20
		1550nm	ps/(nm.km) ≤18
12	Zero dispersion wavelength	Nm	1300-1324
13	Zero dispersion slope	ps/(nm ² ·km)	≤0.092
14	Typical value	ps/(nm ² ·km)	0.04
15	Largest individual fiber	Ps/√ km	0.2
16	Link design values	Ps/√ km	0.1
17	Two way average	1310nm-1550	≤0.01dB



Production Supplier Profile



COMPANY PROFILE



ABOUT FIBER
Guangzhou fiber cablepuls co.,ltd

Fiber cablepuls is one of the high-tech fiber optic cable factories in China that can produce the most complete series of fiber optic cables, equipped with the most advanced fiber optic cable manufacturing, and have the most advanced fiber optic connector production and testing equipment in China.

The factory has obtained SGS ISO9001:2015, ISO14001:2004 and GB/T28001:2001 successively obtained international system certification.

Over the past 12 years, we have provided optical cable products and comprehensive solutions to more than 30 countries and regions around the world, and have received unanimous praise from customers, such as foreign telecom departments of the United States, Mexico Telecom, Thailand Telecom, Philippines Telecom, etc., domestic customers include China Mobile, the General Administration of Radio, Film and Television, Lenovo, and many other large national enterprises.



+8613687956390

cotton@fibercabl



OUR PRODUCTION CAPACITY AND QUALITY CONTROL SYSTEM



How do I place an OEM or customized order?

- 1) Send your purchase intention to our email: cotton@fibercablepuls.com
- 2) Our sales team will contact you to confirm the product specification, packaging, printing, quantity, and other specific information.
- 3) Sign the contract or Proforma Invoice.
- 4) After receiving your deposit, we will start to arrange the production.
- 5) 2 weeks before the completion of production, we will notify you to start contacting shipping.

925-926, Building B1, No. 2 Chuanghui Avenue, Yonghe Yushan InternationalGuangzhou city,Guangdong province,China