



ADSS Cable 24F Fibra Óptica, Double Jacket PE All Dielectric Self-Supporting Aerial Loose Multi-Tube, Aramid Yarn,

Our Product Introduction

Basic Information

- Place of Origin: GUANGZHOU/CHINA
- Brand Name: PUNAISGD
- Certification: ISO/CE/ROSH
- Model Number: ADSS-24B1.3
- Minimum Order Quantity: 1km
- Price: negotiate
- Packaging Details: Wooden Spool /drum
- Delivery Time: 5-25 days
- Payment Terms: 30% TT as deposit, 70% Balance before shipping
- Supply Ability: 100km



Product Specification

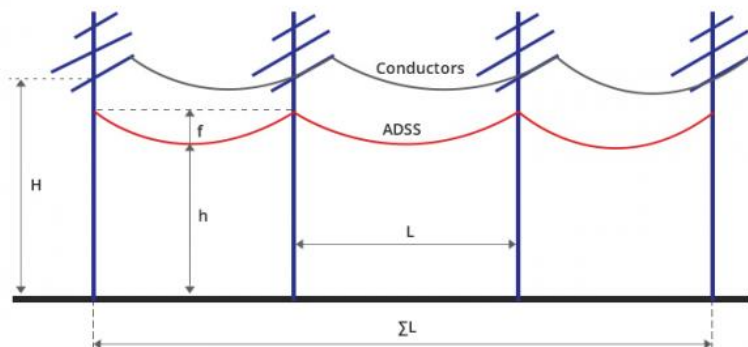
- Model Number: ADSS-24B1.3
- Length: 2km/3km/4km
- Fiber Count: 24/36/48/72/144
- Jacket: PE/DOUBLE JACKET
- Colour: Black
- Strength Member: Double Sheath Double Armored
- SPAN: 400M
- Highlight: **Double Jacket PE ADSS Cable,
Loose Multi-Tube ADSS Cable, 24F ADSS Cable**



for more products please visit us on fiberoptical-cables.com

Product Description

ADSS Cable 24F Fibra Óptica, Double Jacket PE All Dielectric Self-Supporting Aerial, Loose Multi-Tube, Aramid Yarn



Annotations:

H: Height of the pole or tower, namely, the distance between the lowest horizontal.

h: Required minimum distance of ADSS cable to ground.

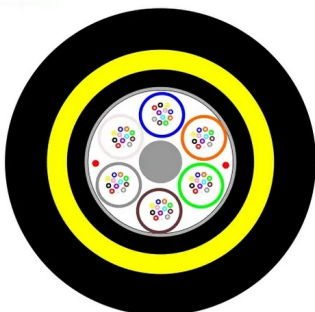
f: Maximum vertical sag of ADSS Cable.

L: Span.

ΣL : Total length between 2 tension fittings.

ADSS cable is loose tube stranded. Fiber, 250 μ m, are positioned in a loose tube made of a high modulus plastic. The tubes are filled with a water-resistant filling compound. The tubes (and fillers) are stranded around a FRP (Fiber Reinforced Plastic) as a non-metallic central strength member into a compact and circular cable core. After the cable core is filled with filling compound, it is covered with thin PE (polyethylene) inner sheath. After stranded layer of aramid yarns are applied over the inner sheath as strength member, the cable is completed with PE or AT (anti-tracking) outer sheath.

STRUCTURE





Technical Data									
		Contents			Fibers				
Item		Fibre Count	6 12 24	48	72	96	144	288	
Loose Tube	Tubes* Fbres/Tube	1x6 2x6 4x6	6x 8 4x12	6x12	8x12	12x12	24x12		
	Outer diameter (mm)	1.8	2.0	2.5	2.5	2.5	2.5		
	Adjustable (OEM)	1.5 2.0	1.8 2.3	2.1 2.3	2.1 2.3	2.1 2.3	2.1 2.3		
Central strength member	Material	Glass Fibre Reinforced Plasticrod (GFRP)							
	Diameter (mm)	2.0	2.0	2.5	2.8	3.7	2.6		
	Adjustable (OEM)	1.8 2.3	1.8 2.3	2.5	2.8	3.7	2.6		
	PE coated diameter (mm)	No				4.2	7.4	4.8	
Water blocking	Material	Water blocking tape							
Peripheral Strength	Material	Aramid Yarn							
Outer Sheath	Thickness (mm)	1.8mm(1.5-2.0mm OEM)							
Cable diameter(mm) Approx.		9.5	9.5 10 12.2	13.9	17.1	20.2			
Cable diameter(mm) Adjustable (OEM)		8.0 8.5 9.0 10.5 11.0							
Operating temperature range(°C)		From -40~+70							
Max. span (m)		50m 80m 100m 120m 150m							
Climate condition		No Ice,25m/s Max Wind Speed							
MAT		Design according to customer requirements							

Fiber Parameters				
No.	Items		Unit	Specification
1	Mode Field Diameter	1310nm	μm	9.2±0.4
		1550nm	μm	10.4±0.8
2	Cladding Diameter		μm	125.0±1.0
3	Cladding Non-Circularity		%	≤1.0
4	Core-Cladding Concentricity Error		μm	≤0.5
5	Coating Diameter		μm	245±5

6	Coating Non-Circularity		%	≤6.0
7	Cladding-Coating Concentricity Error		μm	≤12.0
8	Cable Cutoff Wavelength		nm	$\lambda_{cc} \leq 1260$
9	Attenuation(max.)	1310nm	dB/km	≤0.35
		1550nm	dB/km	≤0.21
		1380nm	dB/km	≤0.35
		1625nm	dB/km	≤0.24
10	Attenuation and wavelength	1310nm 1285-1330nm	dB/km	≤0.04
		1550nm 1525-1575nm	dB/km	≤0.03
		1550nm 1480-1580nm	dB/km	≤0.05
11	Dispersion	1288-1339nm	ps/(nm.km)	≥-3.5, ≤3.5
		1271-1360nm	ps/(nm.km)	≥-5.3, ≤5.3
		1480-1580nm	ps/(nm.km)	≤20
		1550nm	ps/(nm.km)	≤18
12	Zero dispersion wavelength		Nm	1300-1324
13	Zero dispersion slope		ps/(nm ² •km)	≤0.092
14	Typical value		ps/(nm ² •km)	0.04
15	Largest individual fiber		Ps/√ km	0.2
16	Link design values		Ps/√ km	0.1
17	Two way average		1310nm-1550	≤0.01dB

Production Transportation Process



01

Standard production Line,strict SOP
production procedure

02

Attenuation test for each fiber by OTDR after
production,and QC for every detail



03

2km, 3km or 4km per drum Strong wood
drumsealed with wood bars

04

Wooden barrel packaging, can be customized, using high-quality raw materials for transportation



Introduction to ADSS Fiber Cable

ADSS fiber cables are highly resistant to environmental factors such as wind, ice, and UV radiation, making them suitable for long-distance communication networks.

How Much You Know About GYXTW-12B1?

We have established a complete set of independent laboratories, strictly in accordance with the IEC60794

What Is the Difference Between GYFTY Cable and Other Types of Fiber Optic Cables?

GYFTY Cable: Provides high flexibility, easy handling, and routing, making it convenient for installation and maintenance. Other Fiber Optic Cables: May vary in flexibility based on their design and construction, but GYFTY cable is known for its flexibility and ease of use.



Our Factory

NEWS AND FIBER OPTICAL CABLE SOLUTION

FREE SAMPLES
ONE-STOP SHOP

PROFESSIONAL PERSISTENCE

**OEM FOR WELL-KNOW BRANDS**

**SUPPLIER FORTUNE 500 COMPANYS**

**Experiences**
12


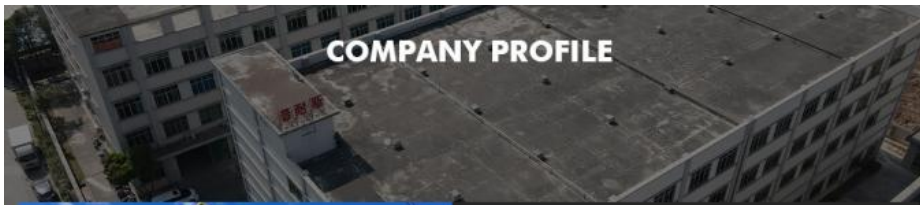
**Sold to Countries**
90+

**Cooperative Suppliers**
120+

**Response Time**
≤ 2h

**On-time Delivery Rate**
99%

COMPANY PROFILE



ABOUT FIBER
[Guangzhou fiber cablepuls co.,ltd](#)

Fiber cablepuls is one of the high-tech fiber optic cable factories in China that can produce the most complete series of fiber optic cables, equipped with the most advanced fiber optic cable manufacturing, and have the most advanced fiber optic connector production and testing equipment in China.

The factory has obtained SGS ISO9001-2015, ISO14001-2004 and GB/T28001-2001 successively obtained international system certification.

Over the past 12 years, we have provided optical cable products and comprehensive solutions to more than 90 countries and regions around the world, and have received unanimous praise from customers, such as foreign telecom departments of the United States, Mexico Telecom, Thailand Telecom, Philippines Telecom, etc., domestic customers include: China Mobile, the General Administration of Radio, Film and Television, Lenovo, and many other large national enterprises.



OUR PRODUCTION CAPACITY AND QUALITY CONTROL SYSTEM



▲ Color Coating



▲ Color Fiber Testing



▲ Fiber to Loose Tube



▲ Stranded Loose Tube



▲ PE Sheath Coated



▲ Finished Cable Testing



TRANSPORT&PAY



Air Freight



Land Transportation



Shipping



Delivery



And More.....



SHIPMENT



PACKAGING

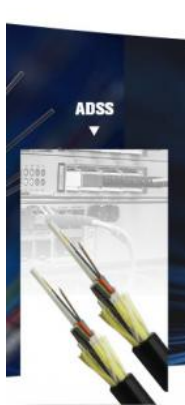


TRUCK LOADING



GOODS RECEIPT

HOT-SALE PRODUCT



ASU
(MINI ADSS)



DIRECT-BURIED





FAQ

1. Why choose us?

We are manufacturer, Located in Guangzhou, China, started from 2011, sell to Domestic Market(100.00%). There are total about 11-50 people in our factory.

2. how can we guarantee quality?

Always a pre-production sample before mass production;
Always final Inspection before shipment;

3.Can you send products to my country?

Sure, we can. If you do not have your own ship forwarder, we can help you.

4. Can you do OEM for me?

We accept all OEM orders,just contact us and give me your design.we will offer you a reasonable price and make samples for you.

5. what services can we provide?

Accepted Delivery Terms: FOB,CIF,EXW

Accepted Payment Currency:USD,EUR,JPY,CAD,AUD,HKD,GBP,CNY,CHF;

Accepted Payment Type: T/T,L/C,D/P D/A,PayPal,Western Union,Escrow;

Language Spoken:English,Chinese



guangzhou fiber cablepuls co ltd



+8613687956390



cotton@fibercablepuls.com



fiberoptical-cables.com

925-926, Building B1, No. 2 Chuanghui Avenue, Yonghe Yushan InternationalGuangzhou city,Guangdong province,China