



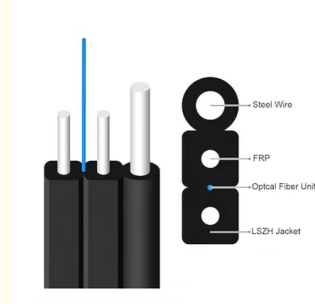
## FTTH Outdoor Drop Cable KABEL FIBER G657A1 1 Core 3 FTTH Drop Wire 4 Core Drop Cable For Network ISP

Our Product Introduction

for more products please visit us on [fiberoptical-cables.com](http://fiberoptical-cables.com)

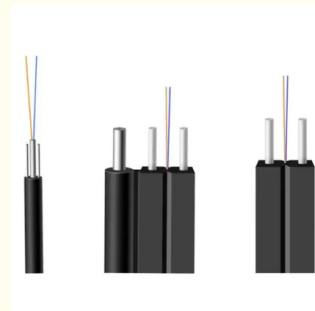
### Basic Information

- Place of Origin: GUANGZHOU/CHINA
- Brand Name: CABLEPULS
- Certification: ISO/CE/ROSH
- Model Number: FTTH DROP CABLE
- Minimum Order Quantity: 2km
- Price: negotiate
- Packaging Details: Wooden Spool /drum
- Delivery Time: 5-25days
- Payment Terms: 30%TT as deposit,70%Balance before shipping.
- Supply Ability: 100km

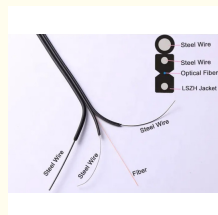


### Product Specification

- Cable Model: GJYXCH/GJYXFCH
- Outer Sheath Color: Black
- Cable Length: Customized
- Feature: Flame Retardant Characteristics
- Jacket: LSZH
- Installation Style: Indoor & Outdoor Self-Support Drop Cable
- Messenger Wire: Steel
- Highlight: 1 Core FTTH Drop Cable, FTTH Drop Cable, G657A1 FTTH Drop Cable



### More Images



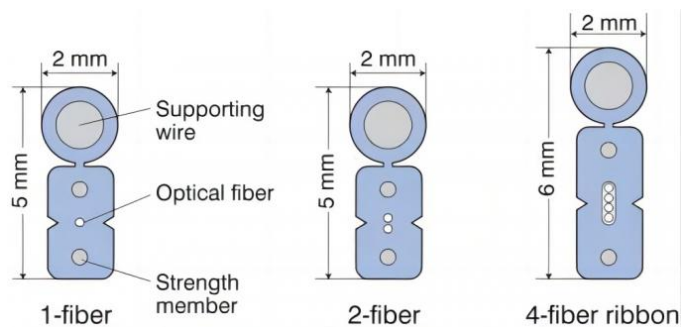
### Product Description

#### FTTH Outdoor Drop Cable KABEL FIBER G657A1 1Core 3 Selling FTTH Drop Wire 4 Core Drop Cable For Network ISP

FTTH DROP CABLE 2CORE 3SEALINGS 3STEEL WIRE OUTDOOR DROP CABLE refers to a type of fiber optic cable used in Fiber-to-the-Home (FTTH) installations. It is designed for outdoor use and is commonly used to connect the optical fiber distribution network to individual homes or buildings.

This specific cable configuration has 1 fiber core, which carries the optical signal, and is protected by 3 sealings, providing additional layers of protection against moisture and other environmental factors. The cable also features 3 steel wires, which provide strength and durability to withstand outdoor conditions and prevent damage to the optical fiber. Overall, the FTTH DROP CABLE 1CORE 3SEALINGS 3STEEL WIRE OUTDOOR DROP CABLE is designed to provide reliable and high-quality fiber optic connectivity to homes and buildings, ensuring efficient data transmission and communication.

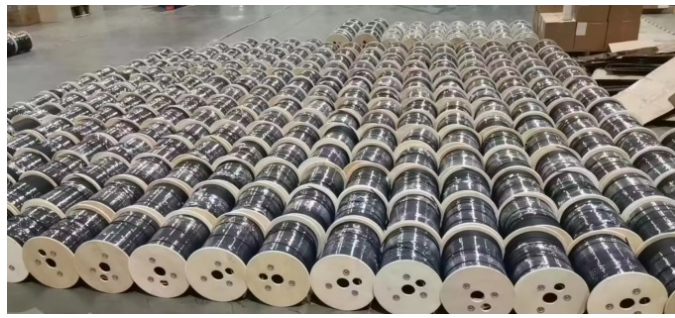
Our Product Introduction



Fiber count	1/2/4
Tight buffer	LSZH, White
Tight buffer diameter	0.90±0.05mm
Fiber Type	G657A1/A2
Strength member	Glass yarn/aramid yarn
Outer sheath	LSZH Lower smoke zero halogen flame retardant & UV Anti
Cable Diameter dimensions	3.0±0.2mm
Operation temperature range	-40 to + 70
Installation temperature range	-5 +50
Transport and storage temperature range	-40 to + 70
Tension Load (N)	Short term :1000N Long term :600N
Crush Load(N)	Long term 1000 N/100mm Short term:2200N/100mm
Minimal installation bending radius	30 x OD
Minimal operation bending radius	15 x OD
Cable marking	The marking length 1meter apart , as required

Type	Diameter (mm)	Weight (kg/km)	Tensile strength Long/short term (N)	Crush Long/short term (N/100mm)	Bending Radius Static/Dynamic
GJXH-1	2.0*3.0	10.5	100/200	500/1000	15/30
GJXH-2	2.0*3.0	10.5	100/200	500/1000	15/30
GJXH-4	2.0*3.0	10.5	100/200	500/1000	15/30
Type	Diameter (mm)	Weight (kg/km)	Tensile strength Long/short term (N)	Crush Long/short term (N/100mm)	Bending Radius Static/Dynamic
GJXFH-1	2.0*3.0	7.5	40/80	500/1000	15/30
GJXFH-2	2.0*3.0	7.5	40/80	500/1000	15/30
GJXFH-4	2.0*3.0	7.5	40/80	500/1000	15/30

Fiber Parameters				
No.	Items	Unit	Specification	
			G.652D	
1	Mode Field Diameter	1310nm	μm	9.2±0.4
		1550nm	μm	10.4±0.8
2	Cladding Diameter		μm	125.0±1.0
3	Cladding Non-Circularity		%	≤1.0
4	Core-Cladding Concentricity Error		μm	≤0.5
5	Coating Diameter		μm	245±5
6	Coating Non-Circularity		%	≤6.0
7	Cladding-Coating Concentricity Error		μm	≤12.0
8	Cable Cutoff Wavelength		nm	λ <sub>c</sub> ≤1260
9	Attenuation(max.)	1310nm	dB/km	≤0.35
		1550nm	dB/km	≤0.21
		1380nm	dB/km	≤0.35
		1625nm	dB/km	≤0.24
10	Attenuation and wavelength	1310nm 1285-1330nm	dB/km	≤0.04
		1550nm 1525-1575nm	dB/km	≤0.03
		1550nm 1480-1580nm	dB/km	≤0.05
11	Dispersion	1288-1339nm	ps/(nm.km)	≥-3.5, ≤3.5
		1271-1360nm	ps/(nm.km)	≥-5.3, ≤5.3
		1480-1580nm	ps/(nm.km)	≤20
		1550nm	ps/(nm.km)	≤18
12	Zero dispersion wavelength		Nm	1300-1324
13	Zero dispersion slope		ps/(nm <sup>2</sup> ·km)	≤0.092
14	Typical value		ps/(nm <sup>2</sup> ·km)	0.04
15	Largest individual fiber		Ps/√ km	0.2
16	Link design values		Ps/√ km	0.1
17	Two way average		1310nm-1550	≤0.01dB



## Production Supplier Profile



**COMPANY PROFILE**



**ABOUT FIBER**  
Guangzhou fiber cablepuls co.,ltd

Fiber cablepuls is one of the high-tech fiber optic cable factories in China that can produce the most complete series of fiber optic cables, equipped with the most advanced fiber optic cable manufacturing, and have the most advanced fiber optic connector production and testing equipment in China.

The factory has obtained SGS ISO9001:2015, ISO14001:2004 and GB/T28001:2001 successively obtained international system certification.

Over the past 12 years, we have provided optical cable products and comprehensive solutions to more than 30 countries and regions around the world, and have received unanimous praise from customers, such as foreign telecom departments of the United States, Mexico Telecom, Thailand Telecom, Philippines Telecom, etc., domestic customers include China Mobile, the General Administration of Radio, Film and Television, Lenovo, and many other large national enterprises.



+8613687956390

cotton@fibercabl



## OUR PRODUCTION CAPACITY AND QUALITY CONTROL SYSTEM



### How do I place an OEM or customized order?

- 1) Send your purchase intention to our email: [cotton@fibercablepuls.com](mailto:cotton@fibercablepuls.com)
- 2) Our sales team will contact you to confirm the product specification, packaging, printing, quantity, and other specific information.
- 3) Sign the contract or Proforma Invoice.
- 4) After receiving your deposit, we will start to arrange the production.
- 5) 2 weeks before the completion of production, we will notify you to start contacting shipping.

925-926, Building B1, No. 2 Chuanghui Avenue, Yonghe Yushan InternationalGuangzhou city,Guangdong province,China