



Outdoor Fiber Optic Cable Single-Mode Armored 2/4/6/8/12/16/24 Core Central Loose Tube GYXTW Cable

Our Product Introduction

for more products please visit us on fiberoptical-cables.com

Basic Information

- Place of Origin: GUANGZHOU/CHINA
- Brand Name: PUNAISGD/CABLEPULS
- Certification: ISO/CE/ROSH
- Model Number: GYXTW-12B1.3
- Minimum Order Quantity: 2km
- Price: negotiate
- Packaging Details: Wooden Spool /drum
- Delivery Time: 5-25days
- Payment Terms: 30%TT as deposit,70%Balance before shipping.
- Supply Ability: 100km



Product Specification

- Model No: GYXTW-12B1.3
- Use: Aerial
- Loose Tube Material: PBT With Jelly
- Cable Diameter: 6mm 7mm 8mm
- Samples: Free
- Fiber Grade: G652D/ G657A1
- Waterblocking Material: Water Blocking Tape Or Filling Compound
- Steel Wire: 0.7*2mm/1*2mm
- Cable Color: Black
- Highlight: Armored Outdoor Fiber Optic Cable, Single-Mode Outdoor Fiber Optic Cable, 24 Core Outdoor Fiber Optic Cable



More Images

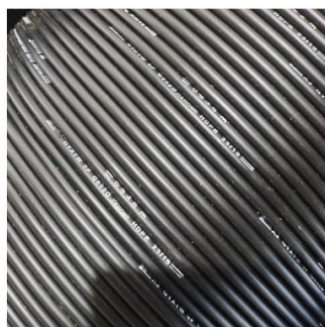


Product Description

Outdoor Fiber Optic Cable Single-Mode Armored 2/4/6/8/12/16/24 Core Central Loose Tube GYXTW Cable Unitube Armored Cable (GYXS/GYXTW)

The fibers, 250µm, are positioned in a loose tube made of a high modulus plastic. The tubes are filled with a water-resistant filling compound. The tube is wrapped with a layer of PSP longitudinally. Between the PSP and the loose tube water-blocking material is applied to keep the cable compact and watertight. Two parallel steel wires are placed at the two sides of the steel tape. The cable is completed with a polyethylene (PE) sheath.

Our Product Introduction



APPLICATION



Smart TV



Computer



Notebook



Router



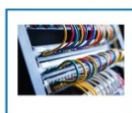
Printer



CCTV

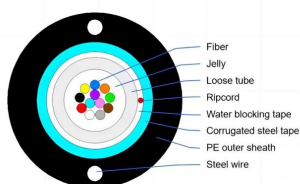


Switch



Switchboard

GYXTW Cable Place Order Information



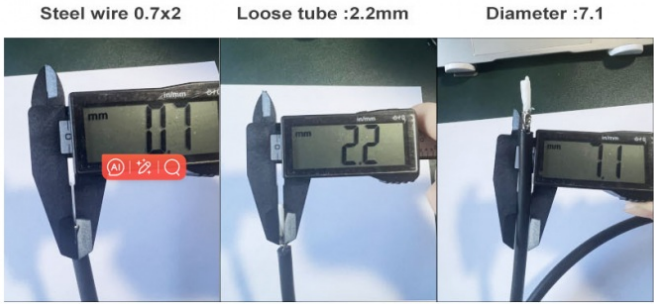
Cable data

| Fiber count | Structure | Fibers per tube | Loose tube diameter (mm) | CSM diameter/pad diameter (mm) | Nominal Thickness of outer jacket (mm) | Cable diameter/Height (mm) | Cable weight (kg/km) |
|-------------|-----------|-----------------|--------------------------|--------------------------------|--|----------------------------|----------------------|
| 2 | 1 | 2 | 1.7±0.1 | 1.0/1.0 | 1.6 | 8.0±0.2 | 57 |
| 4 | 1 | 4 | 1.85±0.1 | 1.0/1.0 | 1.6 | 8.0±0.2 | 58 |
| 6 | 1 | 6 | 1.9±0.1 | 1.0/1.0 | 1.6 | 8.0±0.2 | 58 |
| 8 | 1 | 8 | 2.0±0.1 | 1.0/1.0 | 1.6 | 8.0±0.2 | 60 |
| 12 | 1 | 12 | 2.2±0.1 | 1.0/1.0 | 1.6 | 8.0±0.2 | 60 |

Fiber Parameters

| No. | Items | Unit | Specification |
|-----|-----------------------------------|--------|---------------|
| 1 | Mode Field Diameter | 1310nm | 9.2±0.4 |
| | | 1550nm | 10.4±0.8 |
| 2 | Cladding Diameter | μm | 125.0±1.0 |
| 3 | Cladding Non-Circularity | % | ≤1.0 |
| 4 | Core-Cladding Concentricity Error | μm | ≤0.5 |
| 5 | Coating Diameter | μm | 245±5 |

| | | | |
|----|--------------------------------------|--------------------------|-----------------------|
| 6 | Coating Non-Circularity | % | ≤6.0 |
| 7 | Cladding-Coating Concentricity Error | μm | ≤12.0 |
| 8 | Cable Cutoff Wavelength | nm | λ _{cc} ≤1260 |
| 9 | Attenuation(max.) | 1310nm | dB/km |
| | | 1550nm | dB/km |
| | | 1380nm | dB/km |
| | | 1625nm | dB/km |
| 10 | Attenuation and wavelength | 1310nm 1285-1330nm | dB/km |
| | | 1550nm 1525-1575nm | dB/km |
| | | 1550nm 1480-1580nm | dB/km |
| 11 | Dispersion | 1288-1339nm | ps/(nm.km) |
| | | 1271-1360nm | ps/(nm.km) |
| | | 1480-1580nm | ps/(nm.km) |
| | | 1550nm | ps/(nm.km) |
| 12 | Zero dispersion wavelength | Nm | 1300-1324 |
| 13 | Zero dispersion slope | ps/(nm ² ·km) | ≤0.092 |
| 14 | Typical value | ps/(nm ² ·km) | 0.04 |
| 15 | Largest individual fiber | Ps/√ km | 0.2 |
| 16 | Link design values | Ps/√ km | 0.1 |
| 17 | Two way average | 1310nm-1550 | ≤0.01dB |



Cable Marking&Fibers Colors
COMPANY Fiber cable name N*cores G.652D 2024 XXXXm

*The marking is printed every 1 meter;
***G.652D* means ITU-T Rec. Low Water Peak (LWP) G.652 single mode optical fiber..

Also can according to client cable marking.



Production Supplier Profile

COMPANY PROFILE



ABOUT FIBER

[Guangzhou fiber cablepuls co.,ltd](mailto:cotton@fibercablepuls.com)

Fiber cablepuls is one of the high-tech fiber optic cable factories in China that can produce the most complete series of fiber optic cables, equipped with the most advanced fiber optic cable manufacturing, and have the most advanced fiber optic connector production and testing equipment in China.

The factory has obtained SGS ISO9001:2015, ISO14001:2004 and GB/T28001:2001 successfully obtained international system certification.

Over the past 12 years, we have provided optical cable products and comprehensive solutions to more than 90 countries and regions around the world, and have received unanimous praise from customers, such as foreign telecom departments of the United States, Mexico Telecom, Thailand Telecom, Philippines Telecom, etc.; domestic customers include: China Mobile, the General Administration of Radio, Film and Television, Lenovo, and many other large national enterprises.



OUR PRODUCTION CAPACITY AND QUALITY CONTROL SYSTEM



How do I place an OEM or customized order?

- 1) Send your purchase intention to our email: cotton@fibercablepuls.com
- 2) Our sales team will contact you to confirm the product specification, packaging, printing, quantity, and other specific information.
- 3) Sign the contract or Proforma Invoice.
- 4) After receiving your deposit, we will start to arrange the production.
- 5) 2 weeks before the completion of production, we will notify you to start contacting shipping.

925-926, Building B1, No. 2 Chuanghui Avenue, Yonghe Yushan International Guangzhou city, Guangdong province, China