



FTTH Drop Cable GJYXCH 2 Core LSZH Indoor Outdoor Self-Supporting

Our Product Introduction

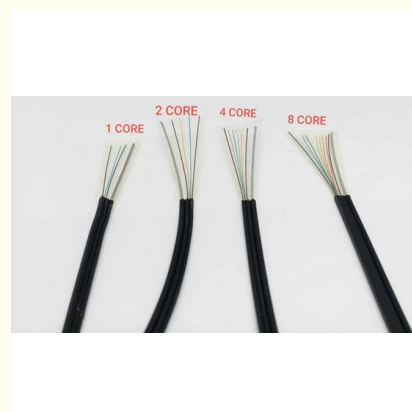
Basic Information

- Place of Origin: GUANGZHOU/CHINA
- Brand Name: CABLEPULS
- Certification: ISO/CE/ROSH
- Model Number: GJYXFCH-4b6
- Minimum Order Quantity: 2km
- Price: negotiate
- Packaging Details: Wooden Spool /drum
- Delivery Time: 5-25days
- Payment Terms: 30%TT as deposit,70%Balance before shipping.
- Supply Ability: 100km



Product Specification

- Cable Model: GJYXCH/GJYXFCH-4b6
- Outer Sheath Color: Black/white
- Cable Length: 1km 2km
- Feature: Flame Retardant Characteristics
- Jacket: LSZH
- Installation Style: Indoor & Outdoor Self-Support Drop Cable
- Messenger Wire: Steel
- Highlight: **2 Core FTTH Drop Cable ,
Fig-8 FTTH Drop Cable**



More Images



for more products please visit us on fiberoptical-cables.com

Product Description

FTTH Drop Cable Fig-8 2 Core FTTH Drop Cable for Indoor & Outdoor

Product Specifications

Attribute	Value
Cable Model	GJYXCH/GJYXFCH-4b6
Outer Sheath Color	Black/white
Cable Length	1km/2km
Feature	Flame retardant characteristics
Jacket	LSZH
Installation Style	Indoor & Outdoor Self-Support Drop Cable
Messenger Wire	Steel

Product Description

The compact, self-supporting Fig 8 aerial fiber optical drop cable is designed for interconnecting optical equipment in FTTH network branches, providing an enhanced performance FTTH solution. The cable features 2 core single mode bend sensitive fibers (ITU-T G657A/G652D), protected by two strength members and a messenger wire. Its lightweight design ensures easy installation and stripping.

Optical Specifications

Parameter	Specification
Attenuation @ 1310 nm	≤ 0.36 dB/km
Attenuation @ 1550 nm	≤ 0.22 dB/km
Chromatic Dispersion @ 1550 nm	≤ 18 ps/nm.km
Zero Dispersion Wavelength	1300 - 1324 nm

Physical and Mechanical Properties

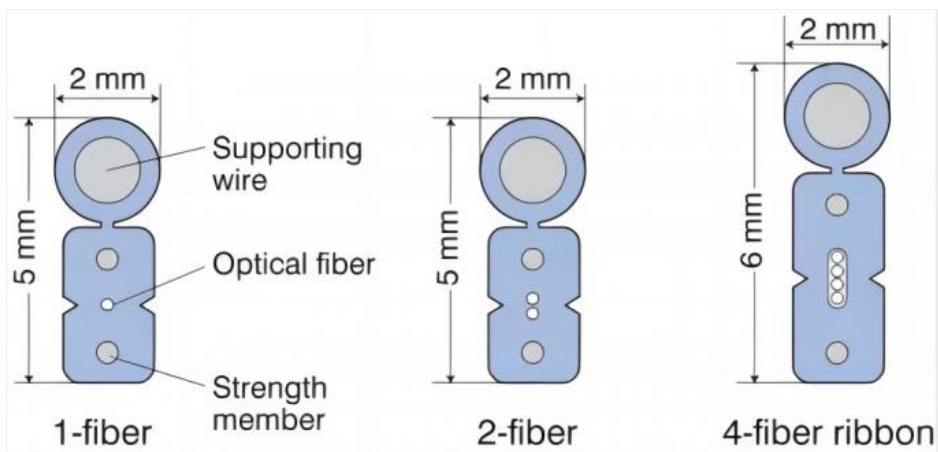
Characteristic	Specification
Outer Diameter	2.0 x 5.0 mm ± 0.2 mm
Net Weight	20 kg/km ± 2 kg/km
Max. Tensile Loading (Short Term)	600 N
Max. Tensile Loading (Long Term)	300 N
Crush Resistance (Short Term)	1000 N
Crush Resistance (Long Term)	2200 N
Operating Temperature Range	-20°C to +60°C

Packaging Information

Reel Length: 2 km per reel, packaged in a single carton box.

Sheath Marking: Brand, Cable type, Fiber type and counts, Year of manufacture, and Length marking as per requirement, at 1 m intervals.

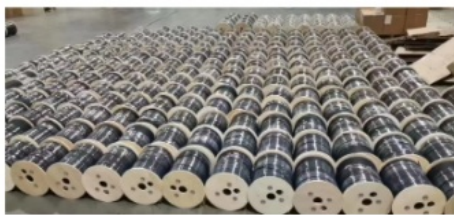
Container Type	1KM/roll	2KM/roll
20'GP container	812KM	1000KM
40'HQ container	1900KM	2000KM

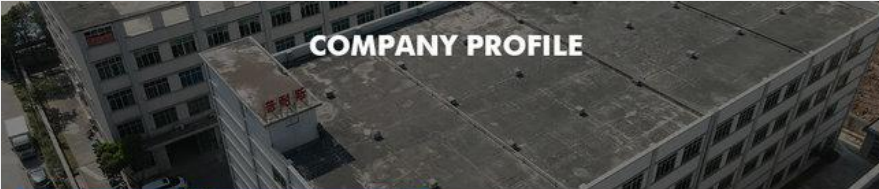


Technical Specifications


Parameter	Value
Fiber count	1/2/4
Tight buffer	LSZH, White
Tight buffer diameter	0.90±0.05mm
Fiber Type	G657A1/A2
Strength member	Glass yarn/aramid yarn
Outer sheath	LSZH Lower smoke zero halogen flame retardant & UV Anti
Cable Diameter dimensions	3.0±0.2mm
Operation temperature range	-40 to +70
Installation temperature range	-5 +50
Transport and storage temperature range	-40 to +70
Tension Load (N)	Short term: 1000N Long term: 600N
Crush Load(N)	Long term: 1000 N/100mm Short term: 2200N/100mm
Minimal installation bending radius	30 x OD
Minimal operation bending radius	15 x OD
Cable marking	The marking length 1 meter apart, as required

Product Images





COMPANY PROFILE



ABOUT FIBER

Guangzhou fiber cablepuls co.,ltd

Fiber cablepuls is one of the high-tech fiber optic cable factories in China that can produce the most complete series of fiber optic cables, equipped with the most advanced fiber optic cable manufacturing, and have the most advanced fiber optic connector production and testing equipment in China.

The factory has obtained SGS ISO9001-2015, ISO14001-2004 and GB/T28001-2001 successively obtained international system certification.

Over the past 12 years, we have provided optical cable products and comprehensive solutions to more than 90 countries and regions around the world, and have received unanimous praise from customers, such as foreign telecom departments of the United States, Mexico Telecom, Thailand Telecom, Philippines Telecom, etc., domestic customers include China Mobile, the General Administration of Radio, Film and Television, Lenovo, and many other large national enterprises.



OUR PRODUCTION CAPACITY AND QUALITY CONTROL SYSTEM



How to Place an OEM or Customized Order

Send your purchase intention to our email: cotton@fibercablepuls.com

Our sales team will contact you to confirm product specifications, packaging, printing, quantity, and other requirements

Sign the contract or Proforma Invoice

After receiving your deposit, we will arrange production

2 weeks before production completion, we will notify you to arrange shipping



guangzhou fiber cablepuls co ltd



+8613687956390



cotton@fibercablepuls.com



fiberoptical-cables.com

925-926, Building B1, No. 2 Chuanghui Avenue, Yonghe Yushan International Guangzhou city, Guangdong

