



FTTH Drop Cable GJYXCH 2 Core LSZH Indoor Outdoor 1km 2km

Basic Information

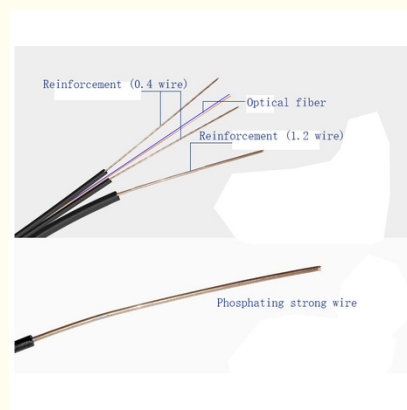
- Place of Origin: GUANGZHOU/CHINA
- Brand Name: CABLEPULS
- Certification: ISO/CE/ROSH
- Model Number: GJYXFCH-2b6
- Minimum Order Quantity: 2km
- Price: negotiate
- Packaging Details: Wooden Spool /drum
- Delivery Time: 5-25days
- Payment Terms: 30%TT as deposit,70%Balance before shipping.
- Supply Ability: 100km

GJYXCH-1B



Product Specification

- Cable Model: GJYXCH/GJYXFCH-2b6
- Outer Sheath Color: Black/white
- Cable Length: 1km 2km
- Feature: Flame Retardant Characteristics
- Jacket: LSZH
- Installation Style: Indoor & Outdoor Self-Support Drop Cable
- Messenger Wire: Steel
- Highlight: **LSZH Jacket FTTH DROP CABLE,
1km FTTH DROP CABLE,
2km FTTH DROP CABLE**



Product Description

FTTH Drop Cable Fiber Optic 1 Core 2 Core

High-quality single mode indoor/outdoor fiber optic cable available in 1km, 2km, and 3km lengths on plywood drums. Features steel messenger wire for self-supporting installation.

Product Specifications

Cable Model	GJYXCH/GJYFCH-2b6
Outer Sheath Color	Black/white
Cable Length	1km, 2km
Feature	Flame retardant characteristics
Jacket	LSZH (Low Smoke Zero Halogen)
Installation Style	Indoor & Outdoor Self-Support Drop Cable
Messenger Wire	Steel

Key Features

- Low transmission loss for optimal signal quality
- Compact size and lightweight design
- Easy installation process
- Steel wire strength member for durability
- Environmentally stable performance
- Excellent compression, tensile, and anti-aging properties

Applications

Telecommunications networks, local area networks, fiber to the home (FTTH) installations, fiber optic sensors, and testing instruments.

Technical Specifications

Optical Performance

Parameter	Specification
Attenuation @ 1310 nm	≤ 0.36 dB/km
Attenuation @ 1550 nm	≤ 0.22 dB/km
Chromatic Dispersion @ 1550 nm	≤ 18 ps/nm.km
Zero Dispersion Wavelength	1300 - 1324 nm

Physical Properties

Characteristic	Specification
Outer Diameter	2.0 x 5.0 mm ± 0.2 mm
Net Weight	20 kg/km ± 2 kg/km
Max. Tensile Loading (Short Term)	600 N
Max. Tensile Loading (Long Term)	300 N
Crush Resistance (Short Term)	1000 N
Crush Resistance (Long Term)	2200 N

Operating Temperature Range

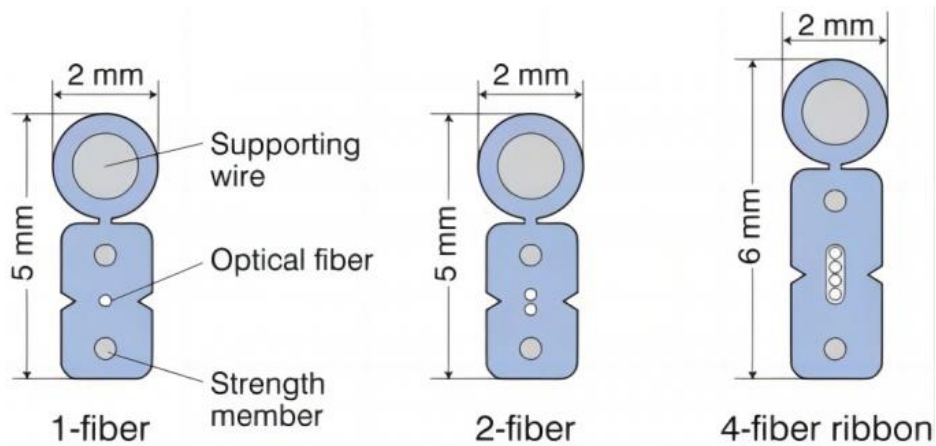
-20°C to +60°C

Packaging & Shipping

Standard reel length: 2 km per reel, packaged in single carton boxes. Sheath marking includes brand, cable type, fiber specifications, manufacture year, and length indicators at 1m intervals.

Container Loading Capacity

Container Type	1km/roll	2km/roll
20'GP container	812KM	1000KM
40'HQ container	1900KM	2000KM



Ordering Information

For OEM or customized orders, please follow these steps:

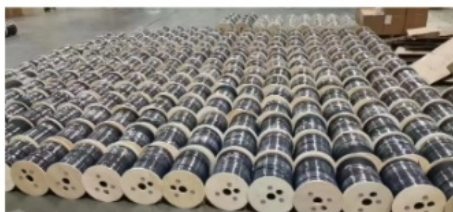
Send your purchase requirements to cotton@fibercablepuls.com

Our sales team will confirm product specifications, packaging, and quantity

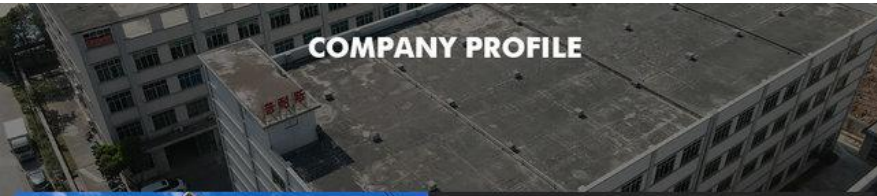
Sign contract or Proforma Invoice

Production begins after deposit receipt

Shipping coordination begins 2 weeks before production completion



COMPANY PROFILE



ABOUT FIBER

Guangzhou fiber cablepuls co.,ltd

Fiber cablepuls is one of the high-tech fiber optic cable factories in China that can produce the most complete series of fiber optic cables, equipped with the most advanced fiber optic cable manufacturing, and have the most advanced fiber optic connector production and testing equipment in China.

The factory has obtained SGS ISO9001-2015, ISO14001-2004 and GB/T28001-2001 successively obtained international system certification.

Over the past 12 years, we have provided optical cable products and comprehensive solutions to more than 90 countries and regions around the world, and have received unanimous praise from customers, such as foreign telecom departments of the United States, Mexico Telecom, Thailand Telecom, Philippines Telecom, etc.; domestic customers include: China Mobile, the General Administration of Radio, Film and Television, Lenovo, and many other large national enterprises.



OUR PRODUCTION CAPACITY AND QUALITY CONTROL SYSTEM



guangzhou fiber cablepuls co ltd



+8613687956390



cotton@fibercablepuls.com



fiberoptical-cables.com

925-926, Building B1, No. 2 Chuanghui Avenue, Yonghe Yushan International Guangzhou city, Guangdong province, China