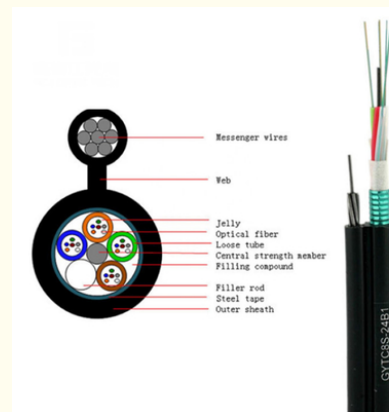




## 12 Core Aerial Figure 8 Fiber Optic Cable with Messenger Wires

### Basic Information

- Place of Origin: GUANGZHOU/CHINA
- Brand Name: PUNAI SGD/CABLEPULS
- Certification: ISO/CE/ROSH
- Model Number: GYTC8S-8B1.3
- Minimum Order Quantity: 2km
- Packaging Details: Wooden Spool /drum
- Delivery Time: 5-25days
- Payment Terms: 30%TT as deposit,70%Balance before shipping.
- Supply Ability: 100km



### Product Specification

- Item NO.: GYTC8S-8B1.3
- TYPE: Fig.8 Shape
- Application: Outdoor AREIAL
- Jacket Material: PE/LSZH
- Fiber Type: G.652D
- Strength Member: Messenger Wires
- Outer Diameter: 8.5\*12.5mm
- Warranty Period: 25 Years
- Highlight: Aerial Figure 8 Fiber Optic Cable, Fiber Optic Cable 12 Core



## Product Description

### Aerial Figure 8 Fiber Optic Cable - 12 Core with Seven Stranded Messenger Wires

#### Product Specifications

Item NO.	GYTC8S-8B1.3
TYPE	Fig.8 shape
Application	Outdoor AERIAL
Jacket Material	PE/LSZH
Fiber Type	G.652D
Strength Member	Messenger wires
Outer Diameter	8.5*12.5mm
Warranty Period	25 years

#### Product Description

This aerial figure 8 fiber optic cable features 12 cores with seven stranded messenger wires. The 250µm fibers are positioned in high modulus plastic loose tubes filled with water-resistant compound. A central steel wire serves as the strength member, with tubes stranded around it to form a compact core. An Aluminum Polyethylene Laminate (APL) moisture barrier and PE sheath complete the figure 8 structure.

#### Key Features

- High tensile strength stranded wires for self-supporting installation

- Excellent mechanical and temperature performance

- Hydrolysis-resistant high strength loose tubes

- Special tube filling compound for critical fiber protection

- Comprehensive watertight protection measures:

  - Central steel wire strength member

  - Loose tube filling compound

  - 100% cable core filling

  - APL moisture barrier



### Technical Specifications

**Fiber Count Options:** 6-8, 10-12, 14-24, 30-72 cores

**Design:** Central Steel wires + Stranded Loose Multi-tube Cable

**Fiber Type:** Single mode G.652.D

**Strength Member:** PSP

**Loose Tube Material:** PBT

**Water Blocking Layer:** Water Blocking tape

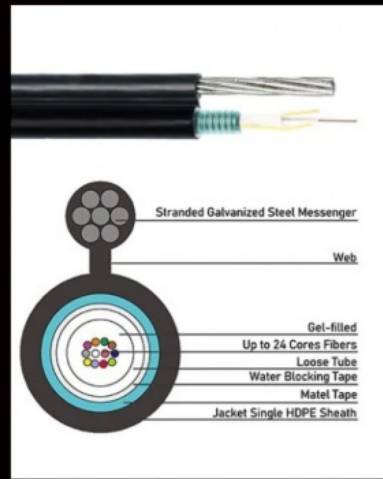
**Outer Sheath:** PE

**Attenuation Coefficient:** @1310nm ≤0.35dB; @1550nm ≤0.2dB

**Bending Radius:** 10× cable diameter (no tension), 20× (under tension)



Model: GYXTC8S  
 Messenger: 1.5mm Standed Galvanized Steel  
 Messenger for Flexibility  
 Fiber : Up to 24 cores, Gel filled  
 Jacket: Single HDPE Sheath  
 Armor: Steel Tape  
 Tension Strength: 1000(Short term)  
 300(Long term)  
 Cable Diameter: 7.6\*14.5mm  
 Package: 4km/drum  
 Weight: 117KG/KM



Model: GYTC8Y  
 Messenger: 7\*1.0mm Standed Galvanized Steel  
 Messenger for Flexibility  
 Fiber : Up to 288 cores, Gel filled  
 Jacket: Single MDPE Sheath  
 Water Block: Water Blocking or Gel-filled  
 Armor: None  
 Tension Strength: 3000(Short term)  
 1000(Long term)  
 Cable Diameter: 9.1\*16.9mm  
 Package: 4km/drum  
 Weight: 142KG/KM

Model: GYTC8S  
 Messenger: 7\*1.0mm Standed Galvanized Steel  
 Messenger for Flexibility  
 Fiber : Up to 288 cores, Gel filled  
 Jacket: Single MDPE Sheath  
 Water Block: Water Blocking or Gel-filled  
 Armor: Steel Tape, Thickness 1mm  
 Tension Strength: 3000(Short term)  
 1000(Long term)  
 Cable Diameter: 9.5\*17mm  
 Package: 4km/drum  
 Weight: 156KG/KM



#### Detailed Cable Specifications

No. of cable	12	24
Fiber Model	G652D	
Design (Strength Member+Tube&Filler)	1+5	
Central Strength Member Material	FRP	
Loose Tube Material	PBT	
Water Blocking Layer Material	Flooding Compound	
Outer Sheath Material	PE	
Messenger Wire Material	Steel stranded	
Cable Diameter (W×H)	8.5×15.2mm	

Temperature Range	Installation: -20°C to +60°C	Operation: -40°C to +70°C
-------------------	------------------------------	---------------------------

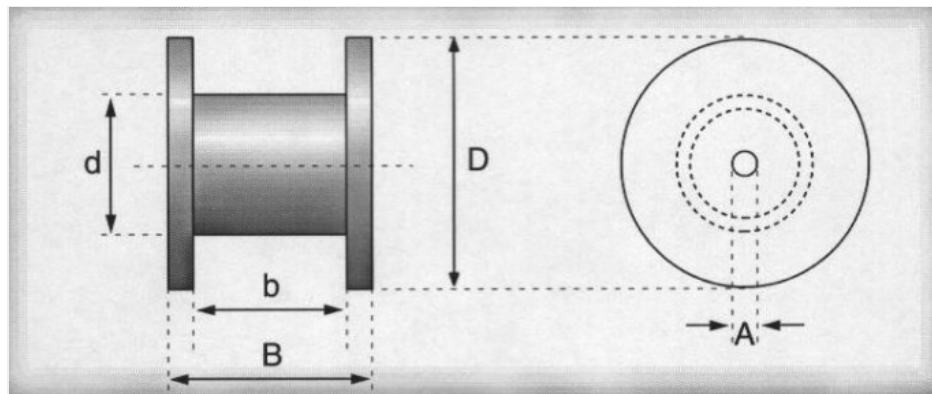
### Cable Marking & Fiber Colors

Standard marking includes: COMPANY Fiber cable name N\*cores G.652D 2024 XXXXm

\*Marking printed every 1 meter

\*\*"G.652D" indicates ITU-T Rec. Low Water Peak (LWP) G.652 single mode optical fiber

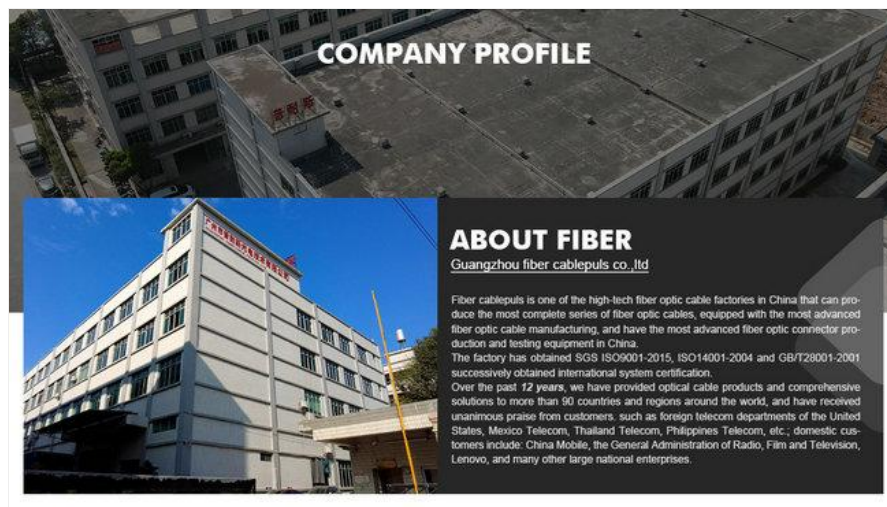
Custom marking available per client requirements.



### Ordering Information

#### OEM/Custom Order Process:

- 1) Send purchase inquiry to: [cotton@fibercablepuls.com](mailto:cotton@fibercablepuls.com)
- 2) Our sales team will confirm specifications, packaging, and quantity
- 3) Sign contract or Proforma Invoice
- 4) Production begins after deposit receipt
- 5) Shipping coordination begins 2 weeks before production completion





## OUR PRODUCTION CAPACITY AND QUALITY CONTROL SYSTEM



**guangzhou fiber cablepuls co ltd**



+8613687956390



cotton@fibercablepuls.com



fiberoptical-cables.com

925-926, Building B1, No. 2 Chuanghui Avenue, Yonghe Yushan InternationalGuangzhou city,Guangdong province,China