



FTTH Drop Cable GJYXFCH Outdoor Self-Supporting LSZH 1km 2km

Basic Information

- Place of Origin: GUANGZHOU/CHINA
- Brand Name: CABLEPULS
- Certification: ISO/CE/ROSH
- Model Number: GJYXFCH-4b6
- Minimum Order Quantity: 2km
- Price: negotiate
- Packaging Details: Wooden Spool /drum
- Delivery Time: 5-25days
- Payment Terms: 30%TT as deposit,70%Balance before shipping.
- Supply Ability: 100km



Product Specification

- Cable Model: GJYXCH/GJYXFCH-4b6
- Outer Sheath Color: Black/white
- Cable Length: 1km 2km
- Feature: Flame Retardant Characteristics
- Jacket: LSZH
- Installation Style: Indoor & Outdoor Self-Support Drop Cable
- Messenger Wire: Steel
- Highlight: **FRP Messenger FTTH DROP CABLE,
GJYXFCH FRP Messenger Drop Cable,
Outdoor FTTH DROP CABLE**



Product Description

FTTH DROP CABLE FRP Messenger Drop Cable Outdoor GJYXFCH

Product Specifications

Attribute	Value
Cable Model	GJYXCH/GJYXFCH-4b6
Outer Sheath Color	Black/white
Cable Length	1km 2km
Feature	Flame retardant characteristics
Jacket	LSZH
Installation Style	Indoor & Outdoor Self-Support Drop Cable
Messenger Wire	Steel

Product Description

The FTTH DROP CABLE FRP Messenger Drop Cable Outdoor GJYXFCH is a self-supporting butterfly-shaped sheathed optical fiber cable designed for outdoor use. The optical fiber is placed in the center with two parallel steel wires on both sides as strengthening elements, encased in a low-smoke halogen-free flame retardant sheath.

Optical Performance Parameters

Parameter	Specification
Attenuation @ 1310 nm	≤ 0.36 dB/km
Attenuation @ 1550 nm	≤ 0.22 dB/km
Chromatic Dispersion @ 1550 nm	≤ 18 ps/nm.km
Zero Dispersion Wavelength	1300 - 1324 nm

Physical and Mechanical Properties

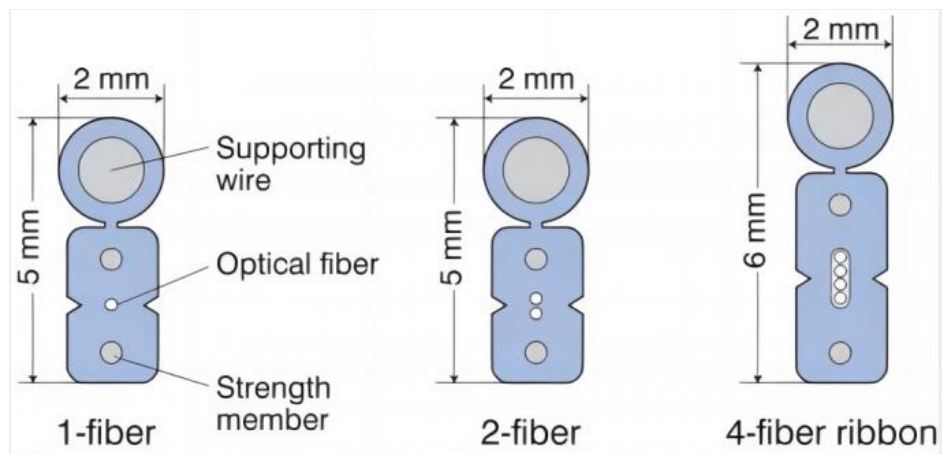
Characteristic	Specification
Outer Diameter	2.0 x 5.0 mm \pm 0.2 mm
Net Weight	20 kg/km \pm 2 kg/km
Max. Tensile Loading (Short Term)	600 N
Max. Tensile Loading (Long Term)	300 N
Crush Resistance (Short Term)	1000 N
Crush Resistance (Long Term)	2200 N
Operating Temperature Range	-20°C to +60°C

Packaging Information

Reel Length: 2 km per reel, packaged in a single carton box.

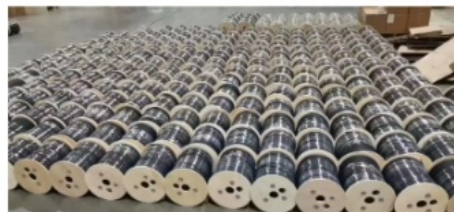
Sheath Marking: Brand, Cable type, Fiber type and counts, Year of manufacture, and Length marking as per requirement, at 1 m intervals.

Container Type	1KM/roll	2KM/roll
20'GP container	812KM	1000KM
40'HQ container	1900KM	2000KM



Detailed Specifications

Parameter	Specification
Fiber count	1/2/4
Tight buffer	LSZH, White
Tight buffer diameter	0.90±0.05mm
Fiber Type	G657A1/A2
Strength member	Glass yarn/aramid yarn
Outer sheath	LSZH Lower smoke zero halogen flame retardant & UV Anti
Cable Diameter dimensions	3.0±0.2mm
Operation temperature range	-40 to + 70



How to Place an OEM or Customized Order

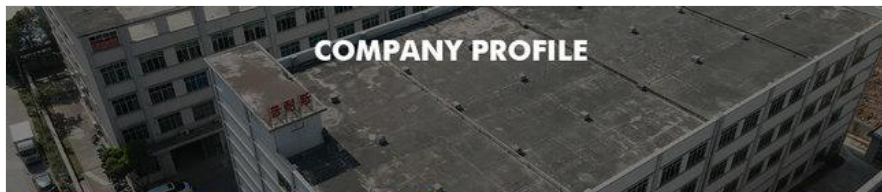
Send your purchase intention to our email: cotton@fibercablepuls.com

Our sales team will contact you to confirm product specifications, packaging, printing, quantity, and other details

Sign the contract or Proforma Invoice

After receiving your deposit, we will arrange production

2 weeks before production completion, we will notify you to arrange shipping



COMPANY PROFILE



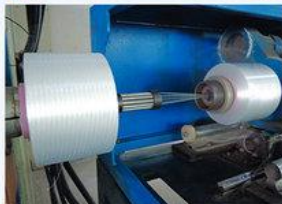
ABOUT FIBER

Guangzhou fiber cablepuls co.,ltd

Fiber cablepuls is one of the high-tech fiber optic cable factories in China that can produce the most complete series of fiber optic cables, equipped with the most advanced fiber optic cable manufacturing, and have the most advanced fiber optic connector production and testing equipment in China.

The factory has obtained SGS ISO9001-2015, ISO14001-2004 and GB/T28001-2001 successively obtained international system certification.

Over the past 12 years, we have provided optical cable products and comprehensive solutions to more than 90 countries and regions around the world, and have received unanimous praise from customers, such as foreign telecom departments of the United States, Mexico Telecom, Thailand Telecom, Philippines Telecom, etc., domestic customers include: China Mobile, the General Administration of Radio, Film and Television, Lenovo, and many other large national enterprises.



OUR PRODUCTION CAPACITY AND QUALITY CONTROL SYSTEM



▲ Color Coating



▲ Color Fiber Testing



▲ Fiber to Loose Tube



▲ Stranded Loose Tube



▲ PE Sheath Coated



▲ Finished Cable Testing



guangzhou fiber cablepuls co ltd



+8613687956390



cotton@fibercablepuls.com



fiberoptical-cables.com

925-926, Building B1, No. 2 Chuanghui Avenue, Yonghe Yushan International Guangzhou city, Guangdong province, China