



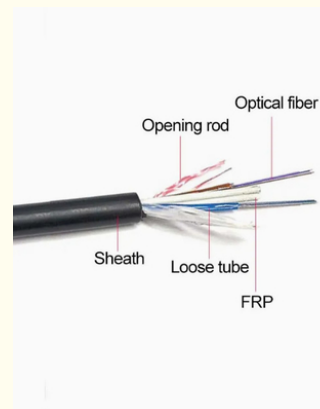
## Asu Optic Fibre Cable Black Multi Core Outdoor Communication Optical Fiber Cable

Our Product Introduction

for more products please visit us on [fiberoptical-cables.com](http://fiberoptical-cables.com)

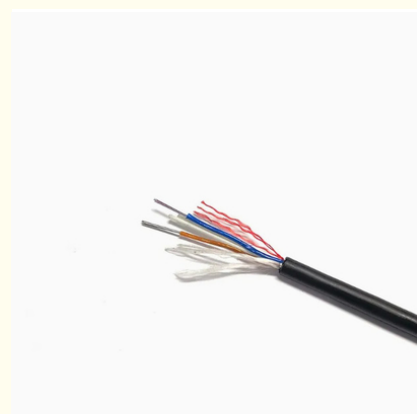
### Basic Information

- Place of Origin: GUANGZHOU/CHINA
- Brand Name: PUNAISGD/CABLEPULS
- Certification: ISO/CE/ROSH
- Model Number: ASU-8B1.3-120/80m
- Minimum Order Quantity: 2km
- Price: negotiate
- Packaging Details: Wooden Spool /drum
- Delivery Time: 5-25days
- Payment Terms: 30%TT as deposit,70%Balance before shipping.
- Supply Ability: 100km

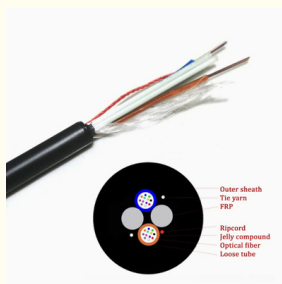
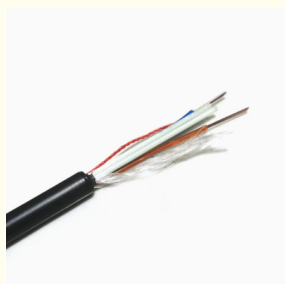


### Product Specification

- Item NO.: ASU-8B1.3-120/80m
- Fiber Count: 12
- Inner Sheath Material: PE
- Installation Method: Aerial
- Strength Member Material: FRP\*2
- Cable Diameter: 7mm/8mm
- Span: 80m-120m
- Installation: Self- Supporting Aerial
- Oem: Available
- Color: Black
- Structure: Loose Tube
- Application: Telecommunication,Aerial,Telecom,Network
- Highlight: **ASU Outdoor Communication Optical Fiber Cable**  
**, Multi Core Optical Fiber Cable**



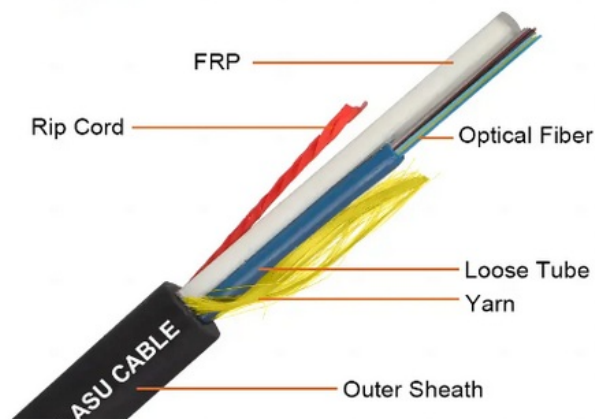
### More Images



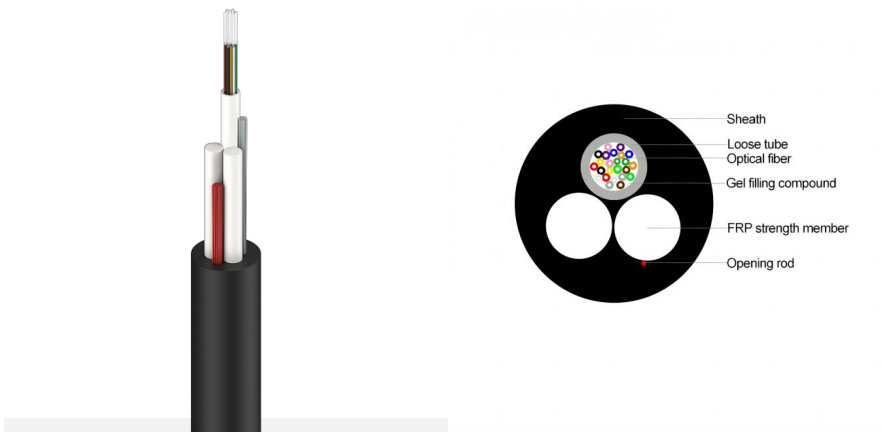
## Product Description

### ASU Cable CABLE Asu Best Price Optic Fibre Cable Black Multi Core Outdoor Communication Optical Fiber Cable

Aerial Self- Supported ASU Fiber Optic Cable has a loose tube structure and water-resistant gel compound to provide crucial protection for the fiber. Over the tube, water-blocking material is applied to keep the cable watertight. Two parallel fiber reinforced plastic(FRP) elements are placed on the two sides. The cable is covered with a single PE outer sheath. It is especially suitable for installation in aerial for long-distance communication.



### ASU Cable Place Order Information



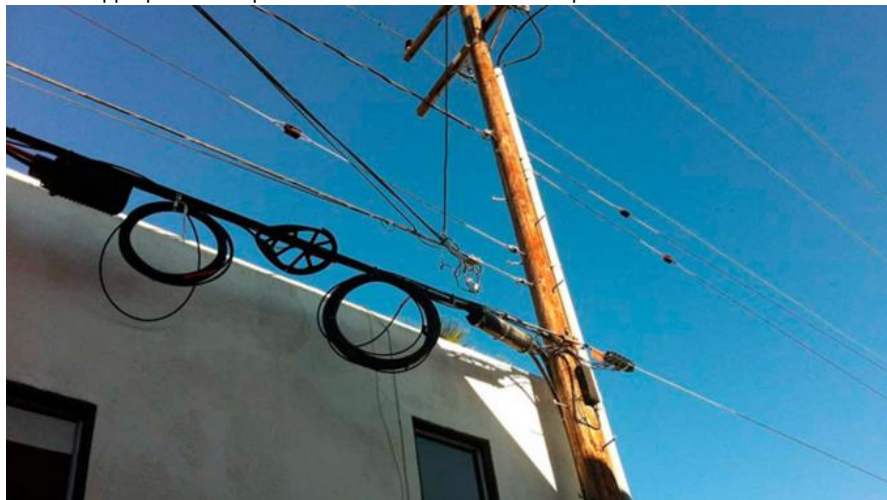
### The Technical Data of ASU Fiber Optic Cable

|                 |           |              |           |
|-----------------|-----------|--------------|-----------|
| No. of cable    |           | 12           | 24        |
| Fiber Model     |           | G.652D       |           |
| Loose Tube      | Material  | PBT          |           |
|                 | Diameter  | 2.5±0.1mm    | 2.8±0.1mm |
|                 | Thickness | 0.32±0.05 mm |           |
|                 | Color     | Nature       |           |
| Strength Member | Material  | FRP          |           |
|                 | Diameter  | 2.5±0.05 mm  | 2.5±0.1mm |
|                 | Material  | PE           |           |

|                            |                                      |                          |                        |
|----------------------------|--------------------------------------|--------------------------|------------------------|
| Outer Sheath               | Color                                | Black                    |                        |
| Cable Diameter             |                                      | 8.0±0.2 mm               | 8.5±0.2 mm             |
| Cable Weight               |                                      | 55±5.0 kg/km             | 65±5.0 kg/km           |
| Allowable Tensile Strength |                                      | 1000N                    | 1500N                  |
| Allowable Crush Resistance |                                      | 1100N/100mm              | 2200N/100mm            |
| Min. bending radius        | Without Tension                      | 10.0×Cable-φ             |                        |
|                            | Under Maximum Tension                | 20.0×Cable-φ             |                        |
| Temperature range (°C)     | Installation                         | -20~+60                  |                        |
|                            | Transport&Storage                    | -40~+70                  |                        |
|                            | Operation                            | -40~+70                  |                        |
| Fiber Parameters           |                                      |                          |                        |
| No.                        | Items                                | Unit                     | Specification          |
|                            |                                      |                          | G.652D                 |
| 1                          | Mode Field Diameter                  | 1310nm                   | 9.2±0.4                |
|                            |                                      | 1550nm                   | 10.4±0.8               |
| 2                          | Cladding Diameter                    | μm                       | 125.0±1.0              |
| 3                          | Cladding Non-Circularity             | %                        | ≤1.0                   |
| 4                          | Core-Cladding Concentricity Error    | μm                       | ≤0.5                   |
| 5                          | Coating Diameter                     | μm                       | 245±5                  |
| 6                          | Coating Non-Circularity              | %                        | ≤6.0                   |
| 7                          | Cladding-Coating Concentricity Error | μm                       | ≤12.0                  |
| 8                          | Cable Cutoff Wavelength              | nm                       | λ <sub>cc</sub> ≤1260  |
| 9                          | Attenuation(max.)                    | 1310nm                   | dB/km ≤0.35            |
|                            |                                      | 1550nm                   | dB/km ≤0.21            |
|                            |                                      | 1380nm                   | dB/km ≤0.35            |
|                            |                                      | 1625nm                   | dB/km ≤0.24            |
| 10                         | Attenuation and wavelength           | 1310nm 1285-1330nm       | dB/km ≤0.04            |
|                            |                                      | 1550nm 1525-1575nm       | dB/km ≤0.03            |
|                            |                                      | 1550nm 1480-1580nm       | dB/km ≤0.05            |
| 11                         | Dispersion                           | 1288-1339nm              | ps/(nm.km) ≥-3.5, ≤3.5 |
|                            |                                      | 1271-1360nm              | ps/(nm.km) ≥-5.3, ≤5.3 |
|                            |                                      | 1480-1580nm              | ps/(nm.km) ≤20         |
|                            |                                      | 1550nm                   | ps/(nm.km) ≤18         |
| 12                         | Zero dispersion wavelength           | Nm                       | 1300-1324              |
| 13                         | Zero dispersion slope                | ps/(nm <sup>2</sup> *km) | ≤0.092                 |
| 14                         | Typical value                        | ps/(nm <sup>2</sup> *km) | 0.04                   |
| 15                         | Largest individual fiber             | Ps/√ km                  | 0.2                    |
| 16                         | Link design values                   | Ps/√ km                  | 0.1                    |
| 17                         | Two way average                      | 1310nm-1550              | ≤0.01dB                |

#### Installation of ASU Fiber Optic Cable

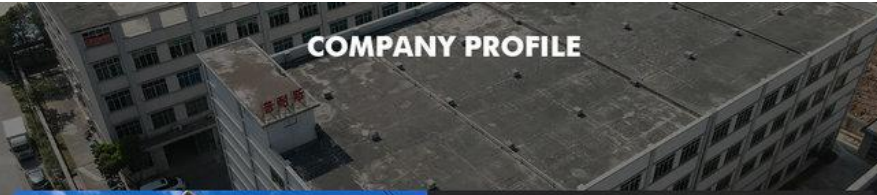

When installing an ASU cable, ensure it does not bend beyond its minimum radius, avoid physical damage during handling, and use appropriate clamps to secure it without excessive pressure.



Ready to ship



## Production Supplier Profile

### COMPANY PROFILE

### ABOUT FIBER

[Guangzhou fiber cablepuls co.,ltd](#)

Fiber cablepuls is one of the high-tech fiber optic cable factories in China that can produce the most complete series of fiber optic cables, equipped with the most advanced fiber optic cable manufacturing, and have the most advanced fiber optic connector production and testing equipment in China.

The factory has obtained SGS ISO9001:2015, ISO14001:2004 and GB/T28001:2001 successively obtained international system certification.

Over the past 12 years, we have provided optical cable products and comprehensive solutions to more than 90 countries and regions around the world, and have received unanimous praise from customers. such as foreign telecom departments of the United States, Mexico Telecom, Thailand Telecom, Philippines Telecom, etc., domestic customers include: China Mobile, the General Administration of Radio, Film and Television, Lenovo, and many other large national enterprises.





## OUR PRODUCTION CAPACITY AND QUALITY CONTROL SYSTEM



### How do I place an OEM or customized order?

- 1) Send your purchase intention to our email: [cotton@fibercablepuls.com](mailto:cotton@fibercablepuls.com)
- 2) Our sales team will contact you to confirm the product specification, packaging, printing, quantity, and other specific information.
- 3) Sign the contract or Proforma Invoice.
- 4) After receiving your deposit, we will start to arrange the production.
- 5) 2 weeks before the completion of production, we will notify you to start contacting shipping.



**guangzhou fiber cablepuls co ltd**



+8613687956390



[cotton@fibercablepuls.com](mailto:cotton@fibercablepuls.com)



[fiberoptical-cables.com](http://fiberoptical-cables.com)

925-926, Building B1, No. 2 Chuanghui Avenue, Yonghe Yushan International Guangzhou city, Guangdong province, China