



144 Core Fiber Optic Closure(2 In 2 Out)

Our Product Introduction

for more products please visit us on fiberoptical-cables.com

Basic Information

- Place of Origin: GUANGZHOU/CHINA
- Brand Name: PUNAISGD/CABLEPULS
- Certification: ISO/CE/ROSH
- Model Number: FIBER SPLICE CLOSURE
- Minimum Order Quantity: 2km
- Packaging Details: Wooden Spool /drum
- Delivery Time: 5-25days
- Payment Terms: 30%TT as deposit,70%Balance before shipping.
- Supply Ability: 100km



Product Specification

- Capacity: Up To 144 Fibers
- Fiber Type: Single Mode Or Multimode
- Fiber Storage: Loose Tube Or Ribbon Fiber
- Installation Method: Wall-mounted Or Pole-mounted
- Closure Dimensions: 450mm X 200mm X 100mm
- Sealing Method: Mechanical Sealing
- Application: Outdoor Or Indoor Use
- Operating Temperature: -40°C To 65°C
- Splice Protection Sleeve: Heat Shrinkable Tube
- Protection Level: IP68
- Cable Entry: 4 Cable Ports



More Images



Product Description

144 Core Fiber Optic Closure(2 in 2 out)

Optical splice closures are used to distribute, splice, and store the outdoor optical cables which enter and exit from the ends of the closure. There are two connection ways: direct connection and splitting connection. They are applicable to situations such as overhead, man-well of pipeline, embedded situation etc. Comparing with terminal box, the closure requires much stricter requirement of seal.

Features

The closure casing is made of quality engineering PP plastics, and of good performance of anti-erosion against acid and alkali salt, anti-aging, as well as smooth appearance and reliable mechanical structure.

The mechanical structure is reliable and has the performance of resisting wild environment and intensive climate changes and serious working environment. The protection grade reaches IP68.

The splice trays inside the closure are turn-able like booklets, and have adequate curvature radius and space for winding optical fiber to make sure the curvature radius for optical winding 40mm.Each optical cable and fiber can be operated individually.

The closure is of small volume, big capacity and convenient maintenance. The elastic rubber seal rings inside the closure are of good sealing and sweat-proof performance.

Applications

Used for direct transmission of outdoor cable in aerial,duct and direct buried application.

Used for branching connection and protect the joint.

Our Product Introduction

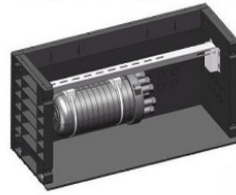
Standard Accessories
Metal spanner:1pcs
Metal hanger :2pcs
Sealing rubber strip:1pcs
Insulating tape:1pcs
Cable tie:3mm*110mm 8pcs
Plastic plug:4pcs
Rubber waterproof strip:2pcs
Heat-shrink sleeve:1.2mm*60mm 144pcs



Strand Overhead application.



Underground application.




Pole application.




Wall mounting application.



Production Supplier Profile



COMPANY PROFILE



ABOUT FIBER

Guangzhou fiber cablepuls co.,ltd

Fiber cablepuls is one of the high-tech fiber optic cable factories in China that can produce the most complete series of fiber optic cables, equipped with the most advanced fiber optic cable manufacturing, and have the most advanced fiber optic connector production and testing equipment in China. The factory has obtained SGS ISO9001:2015, ISO14001:2004 and GB/T28001:2001 successively obtained international system certification. Over the past 12 years, we have provided optical cable products and comprehensive solutions to more than 50 countries and regions around the world, and have received unanimous praise from customers, such as foreign telecom departments of the United States, Mexico Telecom, Thailand Telecom, Philippines Telecom, etc., domestic customers include China Mobile, the General Administration of Radio, Film and Television, Lenovo, and many other large national enterprises.



**guangzhou
fiber
cablepuls
co ltd**

+8613687956390

cotton@fibercabl



OUR PRODUCTION CAPACITY AND QUALITY CONTROL SYSTEM



How do I place an OEM or customized order?

- 1) Send your purchase intention to our email: cotton@fibercablepuls.com
- 2) Our sales team will contact you to confirm the product specification, packaging, printing, quantity, and other specific information.
- 3) Sign the contract or Proforma Invoice.
- 4) After receiving your deposit, we will start to arrange the production.
- 5) 2 weeks before the completion of production, we will notify you to start contacting shipping.

