



Asu Optic Fibre Cable Self-supported ASU Fiber Optic Cable AS80 AS120

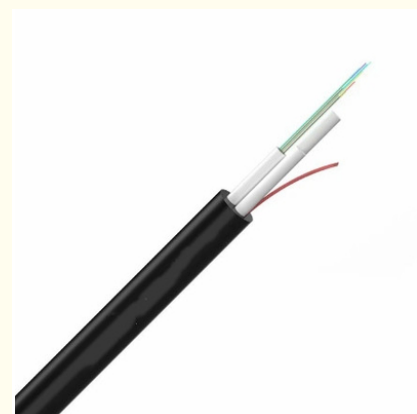
Basic Information

- Place of Origin: GUANGZHOU/CHINA
- Brand Name: PUNAISGD/CABLEPULS
- Certification: ISO/CE/ROSH
- Model Number: ASU-16B1.3-120/80m
- Minimum Order Quantity: 2km
- Price: negotiate
- Packaging Details: Wooden Spool /drum
- Delivery Time: 5-25days
- Payment Terms: 30%TT as deposit,70%Balance before shipping.
- Supply Ability: 100km



Product Specification

- Item NO.: ASU-16B1.3-120/80m
- Fiber Count: 16
- Inner Sheath Material: PE
- Installation Method: Aerial
- Strength Member Material: FRP*2
- Cable Diameter: 7mm/8mm
- Span: 80m-120m
- Installation: Self- Supporting Aerial
- Application: Telecommunication,Aerial,Telecom,Network
- Highlight: **AS80 ASU Optic Fibre Cable,**
AS120 ASU Optic Fibre Cable,
Self-supported ASU Optic Fibre Cable



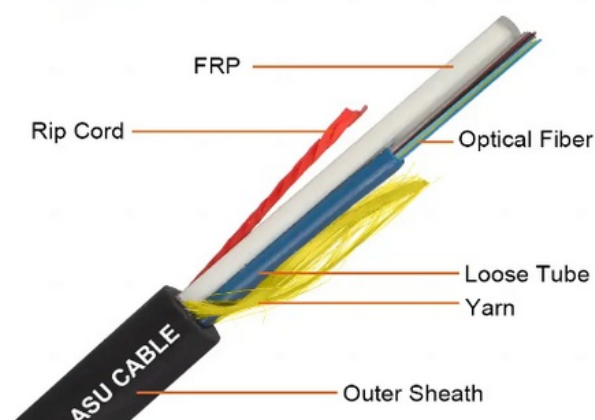
More Images



Product Description

Asu Optic Fibre Cable Self-supported ASU Fiber Optic Cable AS80 AS120

The 2~12 Fibers ASU Cable(AS80 and AS120) is a Self-Supported Optical Cable, It was developed to provide the connection between devices, being indicated for installation in urban and rural networks, in spans of 80m or 120m. Because it is self-supported and totally dielectric, it has FRP strength member as a traction element, thus avoiding electrical discharges in the networks. It is easy to handle and install, eliminating the need to use strings or grounding.



ASU Cable Place Order Information



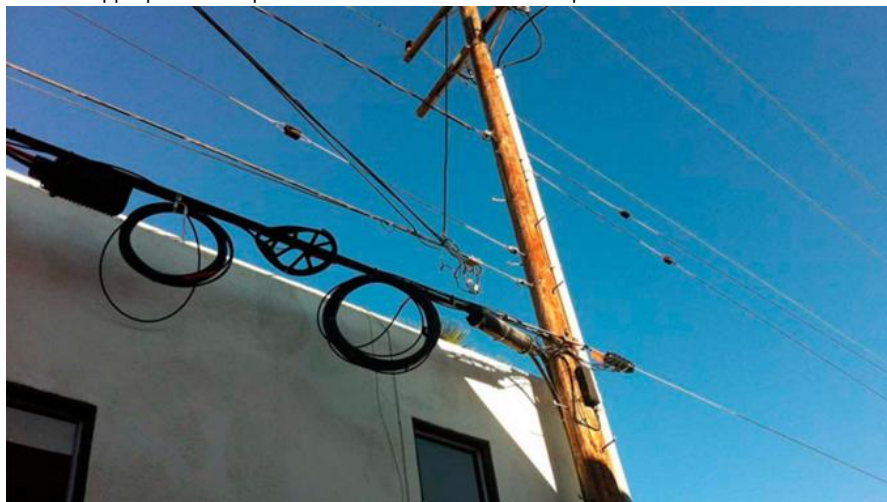
The Technical Data of ASU Fiber Optic Cable

No. of cable		12	24
Fiber Model		G.652D	
Loose Tube	Material	PBT	
	Diameter	2.5±0.1mm	2.8±0.1mm
	Thickness	0.32±0.05 mm	
	Color	Nature	
Strength Member	Material	FRP	
	Diameter	2.5±0.05 mm	2.5±0.1mm
Outer Sheath	Material	PE	
	Color	Black	

Cable Diameter		8.0±0.2 mm	8.5±0.2 mm	
Cable Weight		55±5.0 kg/km	65±5.0 kg/km	
Allowable Tensile Strength		1000N	1500N	
Allowable Crush Resistance		1100N/100m m	2200N/100mm	
Min. bending radius	Without Tension	10.0×Cable-φ		
	Under Maximum Tension	20.0×Cable-φ		
Temperature range ()	Installation	-20~+60		
	Transport&Storage	-40~+70		
	Operation	-40~+70		
Fiber Parameters				
No.	Items		Unit	Specification
				G.652D
1	Mode Field Diameter	1310nm	μm	9.2±0.4
		1550nm	μm	10.4±0.8
2	Cladding Diameter		μm	125.0±1.0
3	Cladding Non-Circularity		%	≤1.0
4	Core-Cladding Concentricity Error		μm	≤0.5
5	Coating Diameter		μm	245±5
6	Coating Non-Circularity		%	≤6.0
7	Cladding-Coating Concentricity Error		μm	≤12.0
8	Cable Cutoff Wavelength		nm	λ _{cc} ≤1260
9	Attenuation(max.)	1310nm	dB/km	≤0.35
		1550nm	dB/km	≤0.21
		1380nm	dB/km	≤0.35
		1625nm	dB/km	≤0.24
10	Attenuation and wavelength	1310nm 1285-1330nm	dB/km	≤0.04
		1550nm 1525-1575nm	dB/km	≤0.03
		1550nm 1480-1580nm	dB/km	≤0.05
11	Dispersion	1288-1339nm	ps/(nm.km)	≥-3.5, ≤3.5
		1271-1360nm	ps/(nm.km)	≥-5.3, ≤5.3
		1480-1580nm	ps/(nm.km)	≤20
		1550nm	ps/(nm.km)	≤18
12	Zero dispersion wavelength		Nm	1300-1324
13	Zero dispersion slope		ps/(nm ² •km)	≤0.092
14	Typical value		ps/(nm ² •km)	0.04
15	Largest individual fiber		Ps/√ km	0.2
16	Link design values		Ps/√ km	0.1
17	Two way average		1310nm-1550	≤0.01dB

Installation of ASU Fiber Optic Cable

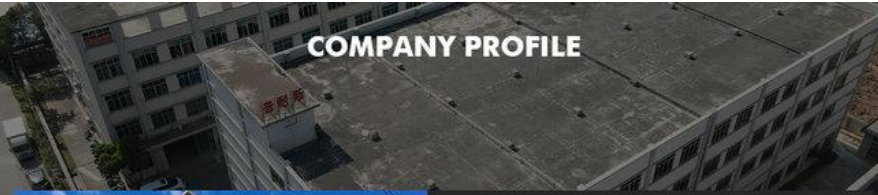

When installing an ASU cable, ensure it does not bend beyond its minimum radius, avoid physical damage during handling, and use appropriate clamps to secure it without excessive pressure.



Ready to ship



Production Supplier Profile

COMPANY PROFILE

ABOUT FIBER

[Guangzhou fiber cablepuls co.,ltd](#)

Fiber cablepuls is one of the high-tech fiber optic cable factories in China that can produce the most complete series of fiber optic cables, equipped with the most advanced fiber optic cable manufacturing, and have the most advanced fiber optic connector production and testing equipment in China.

The factory has obtained SGS ISO9001:2015, ISO14001:2004 and GB/T28001:2001 successively obtained international system certification.

Over the past 12 years, we have provided optical cable products and comprehensive solutions to more than 90 countries and regions around the world, and have received unanimous praise from customers. such as foreign telecom departments of the United States, Mexico Telecom, Thailand Telecom, Philippines Telecom, etc., domestic customers include: China Mobile, the General Administration of Radio, Film and Television, Lenovo, and many other large national enterprises.



OUR PRODUCTION CAPACITY AND QUALITY CONTROL SYSTEM



How do I place an OEM or customized order?

- 1) Send your purchase intention to our email: cotton@fibercablepuls.com
- 2) Our sales team will contact you to confirm the product specification, packaging, printing, quantity, and other specific information.
- 3) Sign the contract or Proforma Invoice.
- 4) After receiving your deposit, we will start to arrange the production.
- 5) 2 weeks before the completion of production, we will notify you to start contacting shipping.



guangzhou fiber cablepuls co ltd



+8613687956390



cotton@fibercablepuls.com



fiberoptical-cables.com

925-926, Building B1, No. 2 Chuanghui Avenue, Yonghe Yushan International Guangzhou city, Guangdong province, China